

1.3 ILLUSTRATIONS

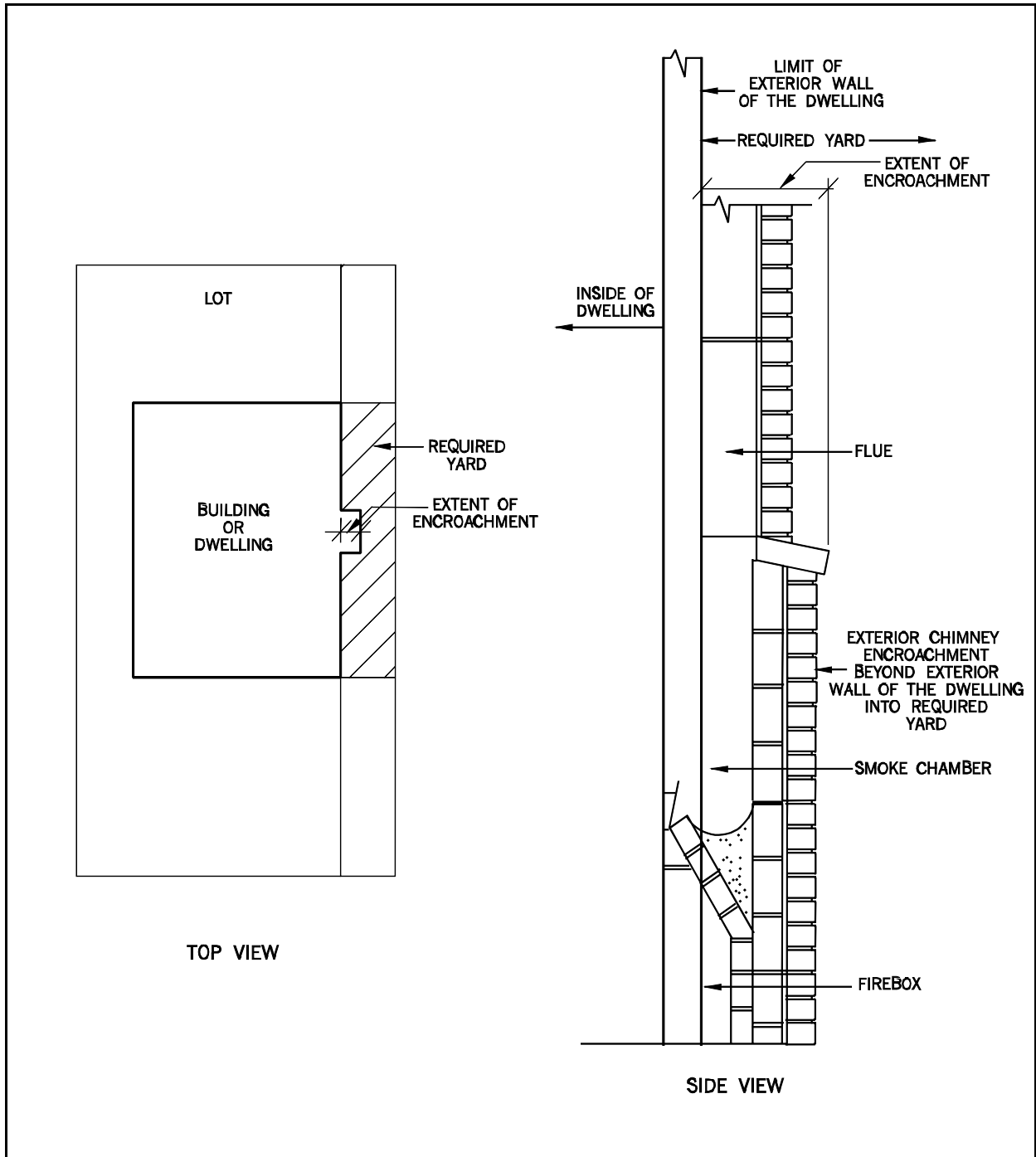


Illustration No. 1

ENCROACHMENT

Note: The above illustrations are for clarification and convenience only and do not form part of this By-law. The Definitions and General Provisions parts of this By-law must be referenced.

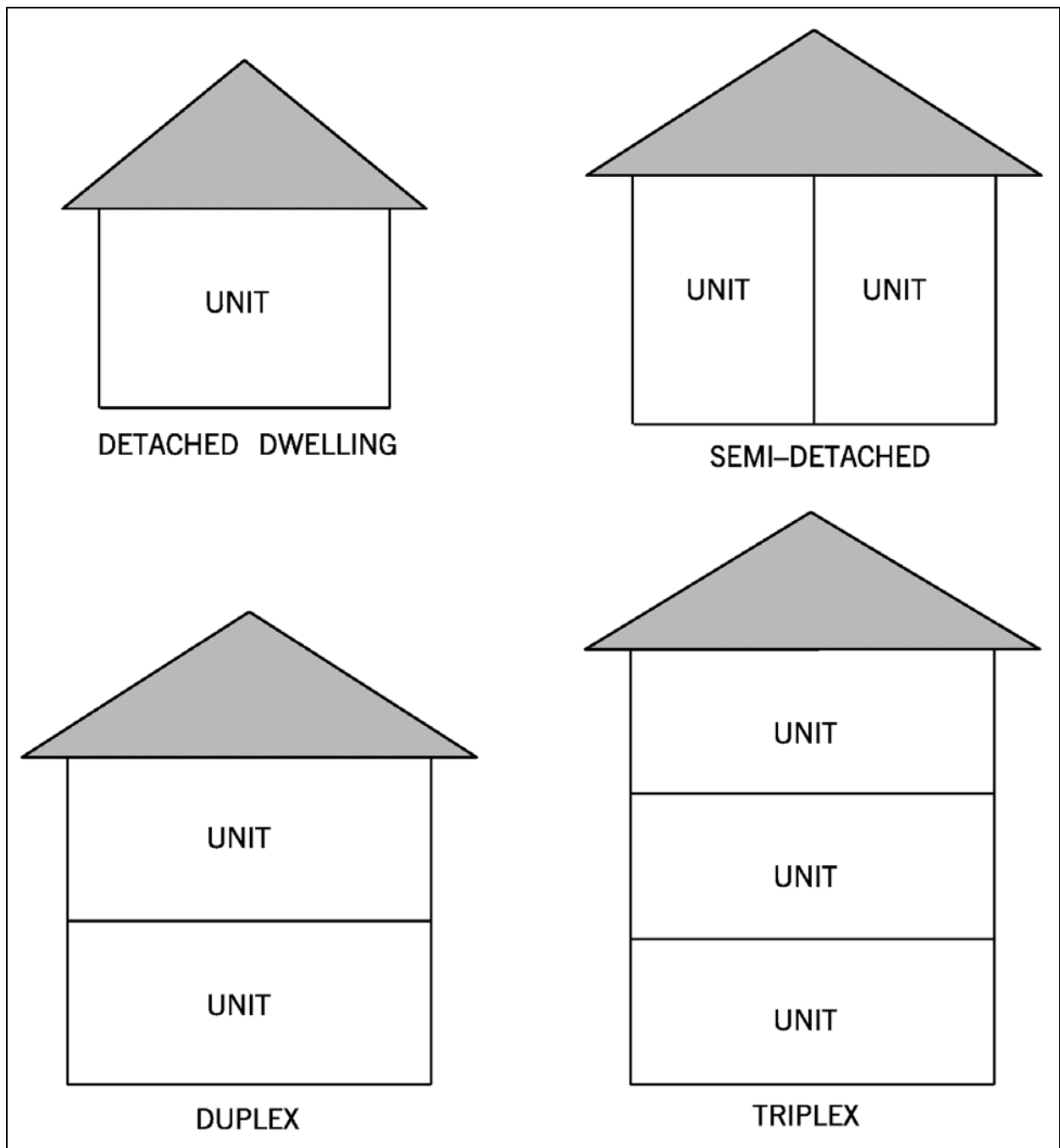


Illustration No. 2

HOUSING TYPES

Note: The above illustrations are for clarification and convenience only and do not form part of this By-law. The Definitions and General Provisions parts of this By-law must be referenced.

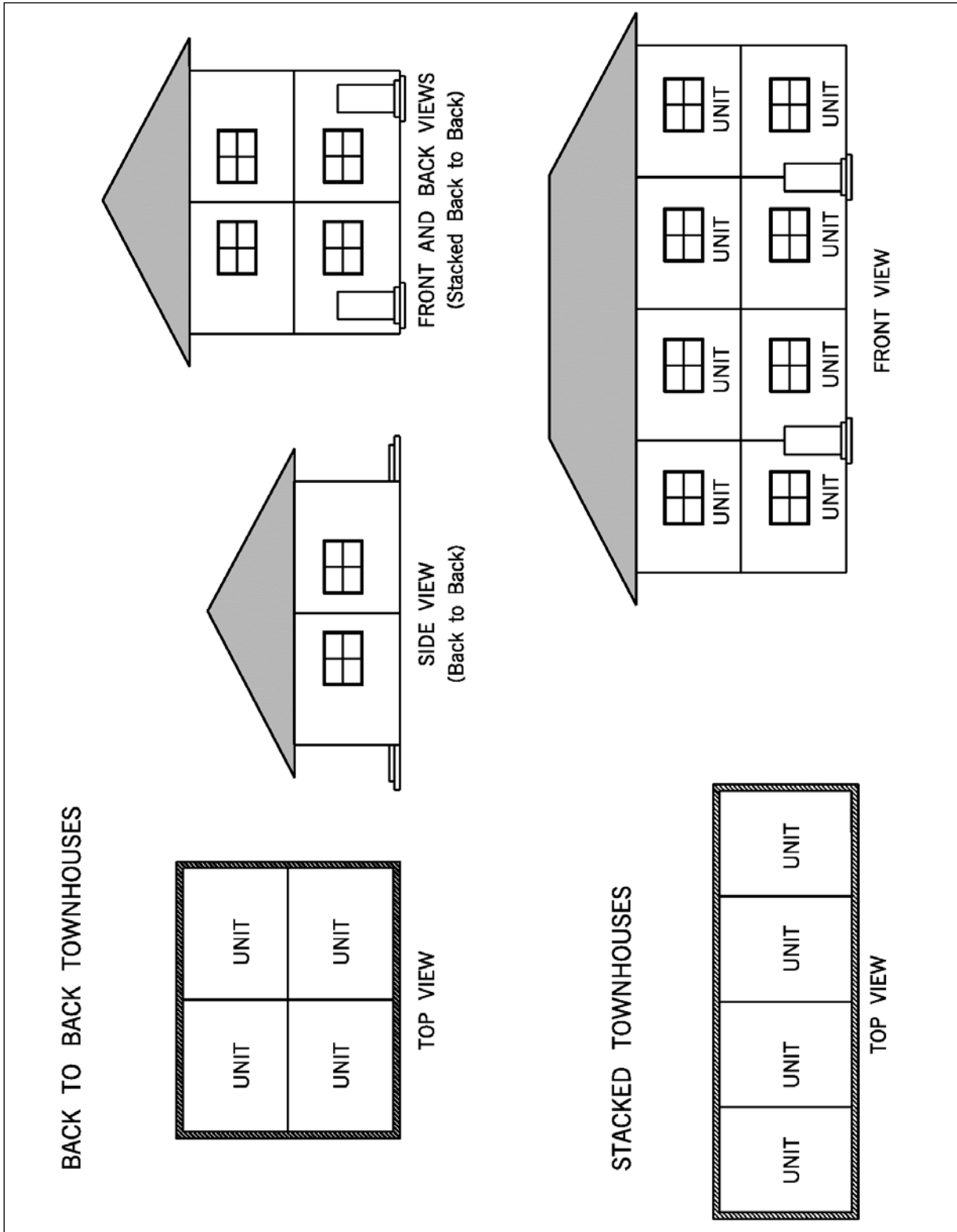


Illustration No. 3

HOUSING TYPES

Note: The above illustrations are for clarification and convenience only and do not form part of this By-law. The Definitions and General Provisions parts of this By-law must be referenced.

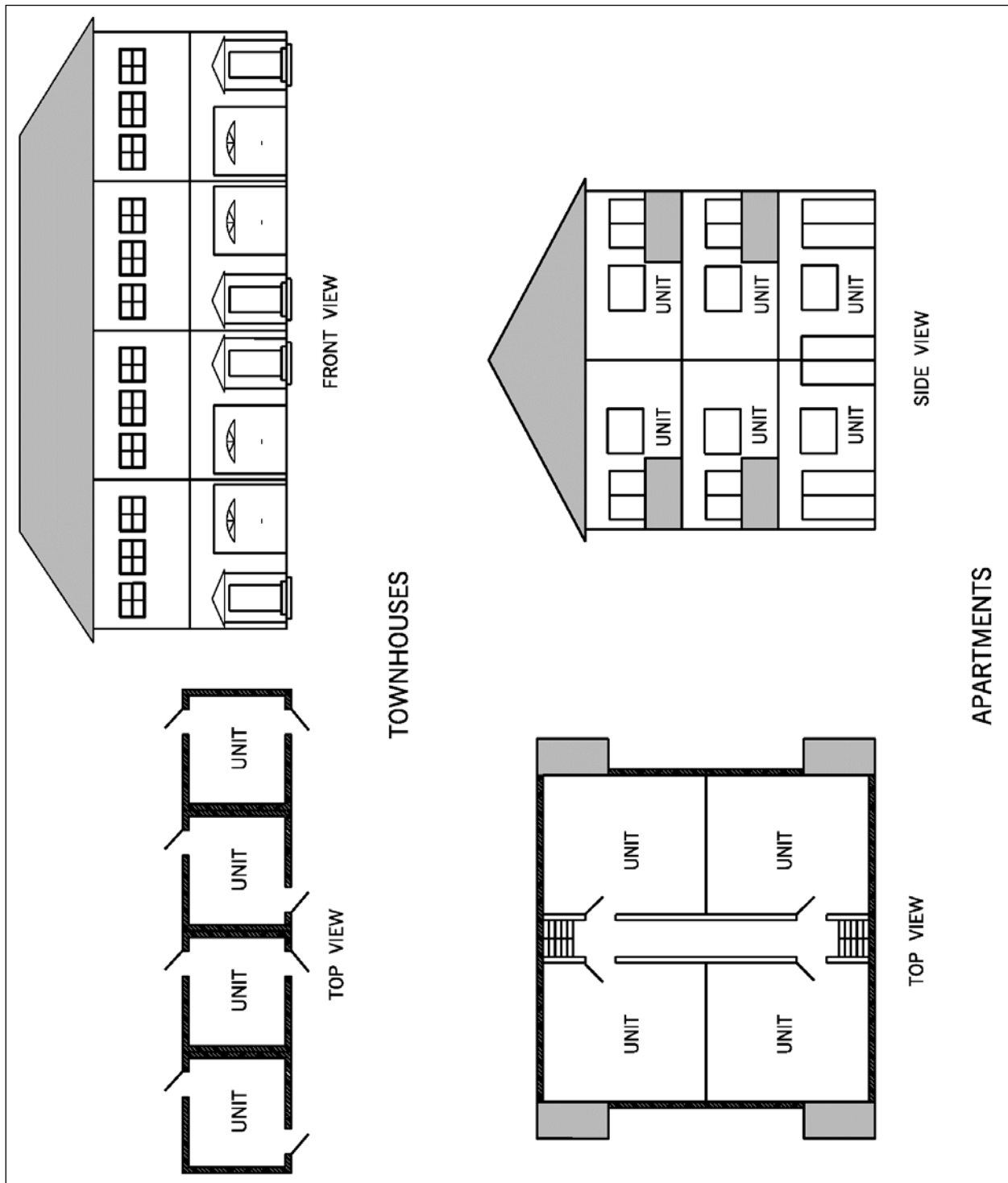


Illustration No. 4

HOUSING TYPES

Note: The above illustrations are for clarification and convenience only and do not form part of this By-law. The Definitions and General Provisions parts of this By-law must be referenced.

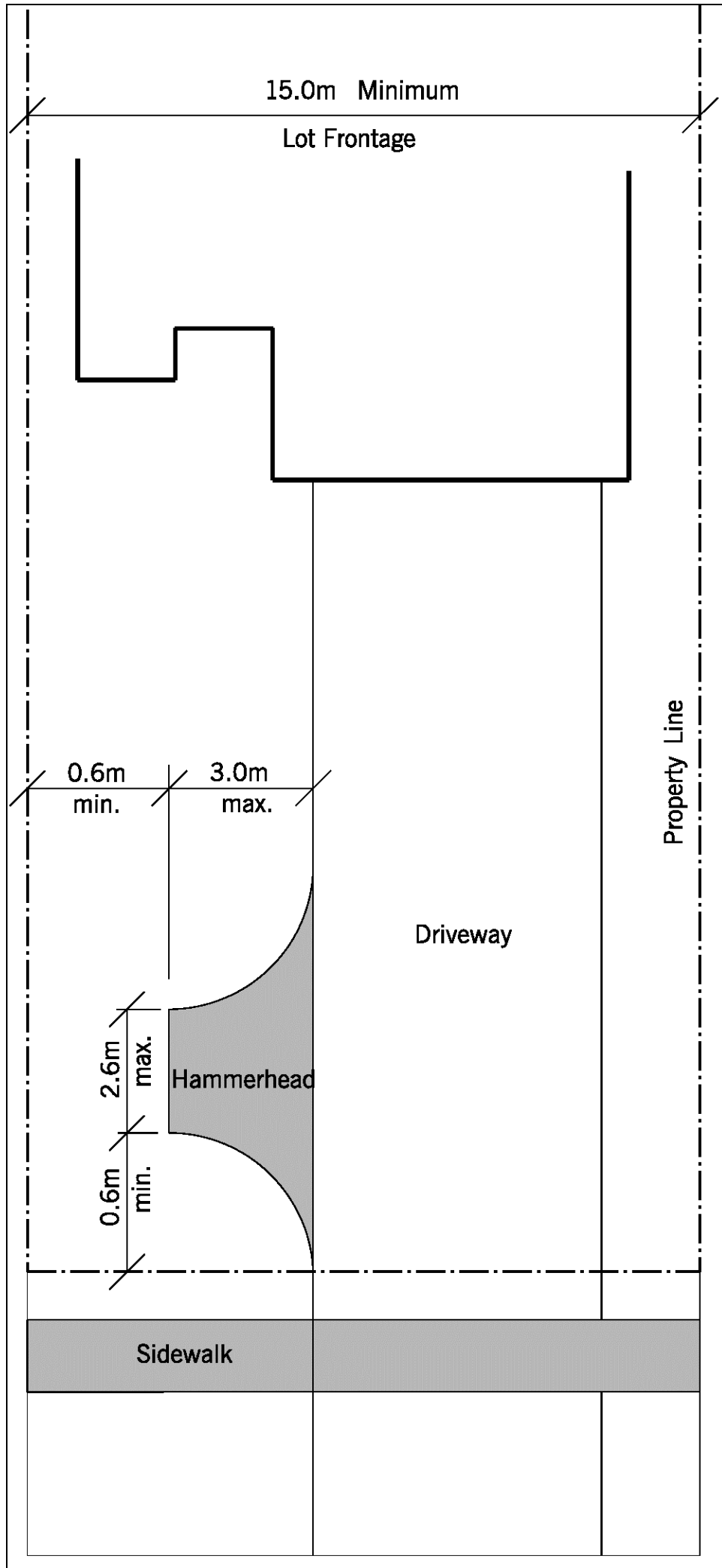


Illustration No. 5 TYPICAL HAMMERHEAD CONFIGURATION

Note: The above illustrations are for clarification and convenience only and do not form part of this By-law. The Definitions and General Provisions parts of this By-law must be referenced.

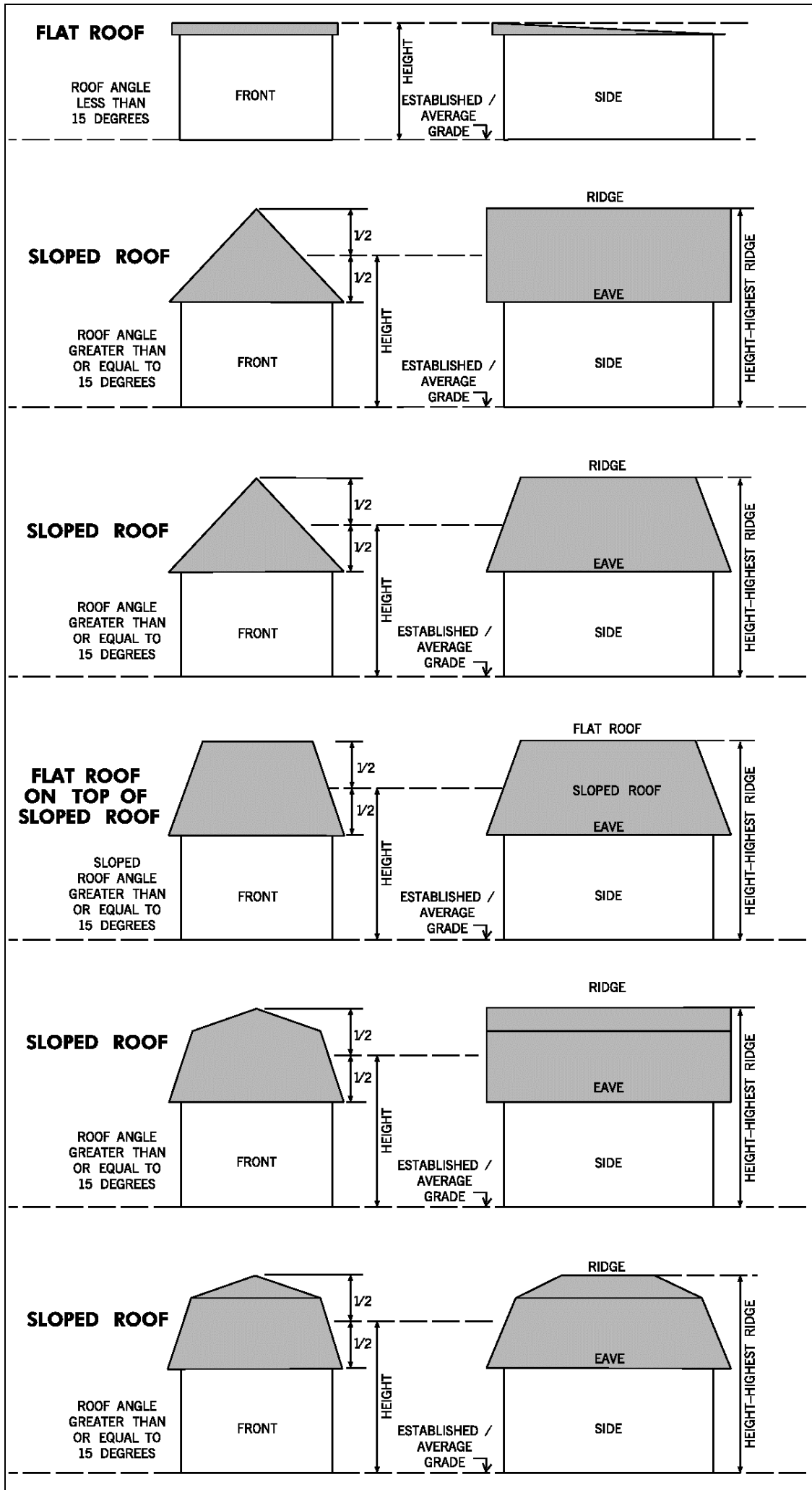


Illustration No. 6

HEIGHT

Note: The above illustrations are for clarification and convenience only and do not form part of this By-law. The Definitions and General Provisions parts of this By-law must be referenced.

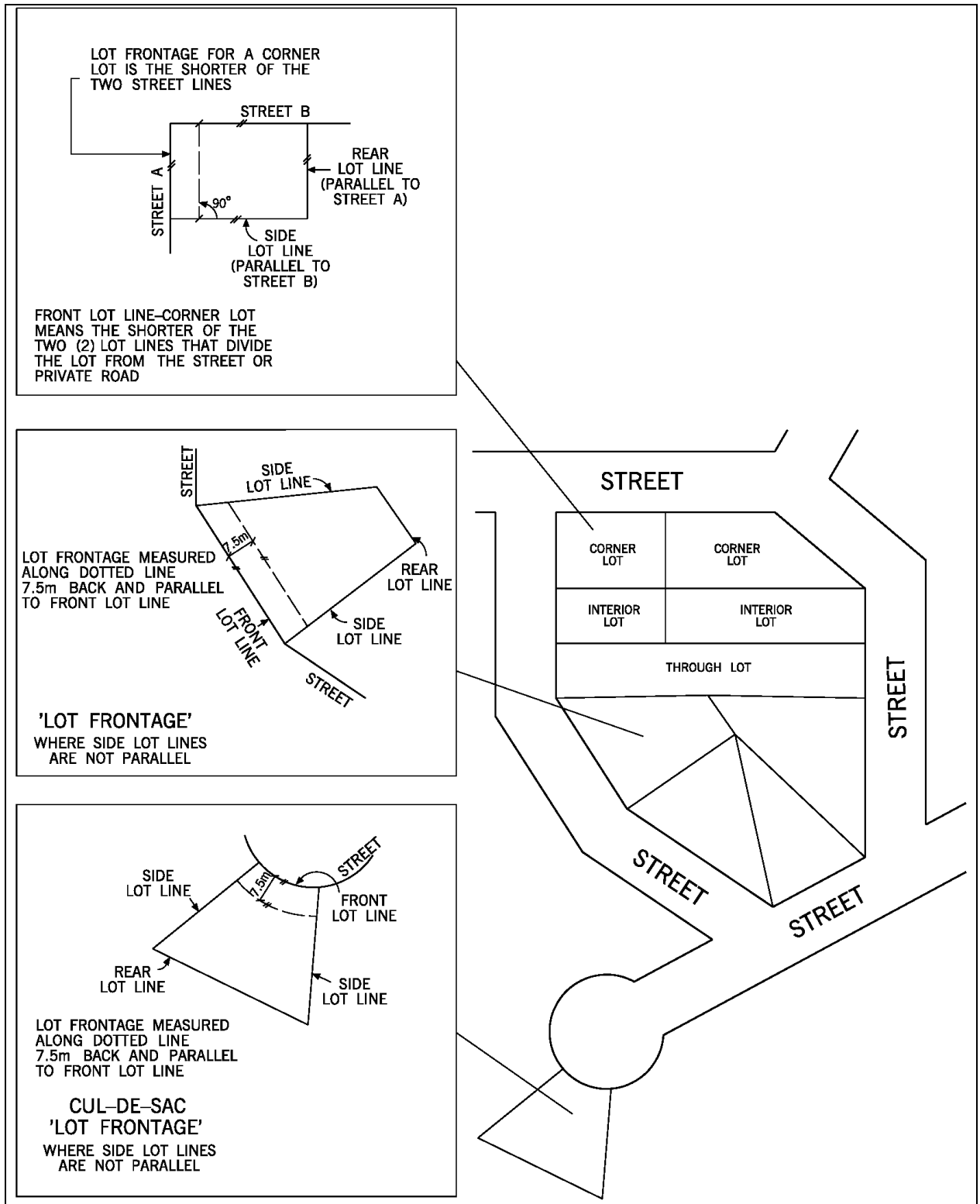


Illustration No. 7

LOT TYPES AND LOT FRONTAGES

Note: The above illustrations are for clarification and convenience only and do not form part of this By-law. The Definitions and General Provisions parts of this By-law must be referenced.

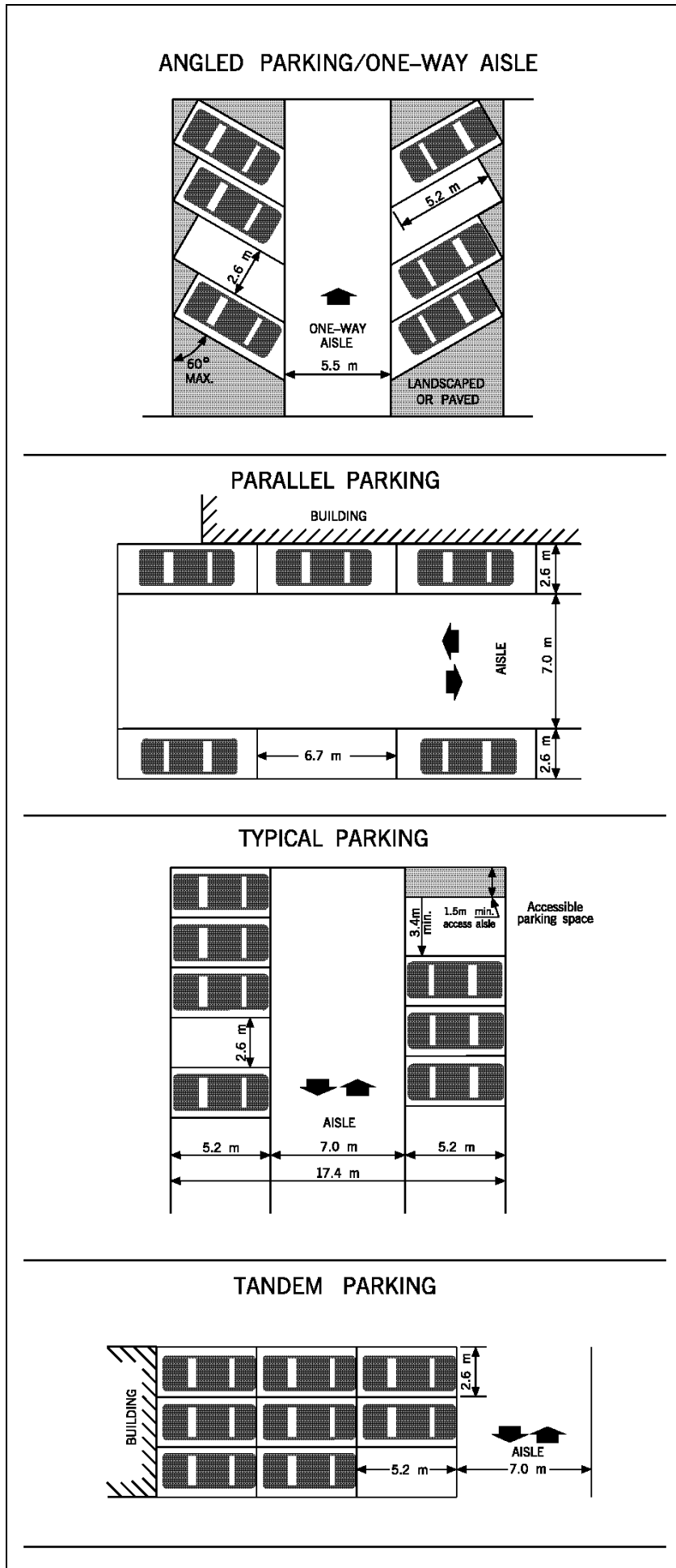


Illustration No. 8

PARKING

Note: The above illustrations are for clarification and convenience only and do not form part of this By-law. The Definitions and General Provisions parts of this By-law must be referenced.

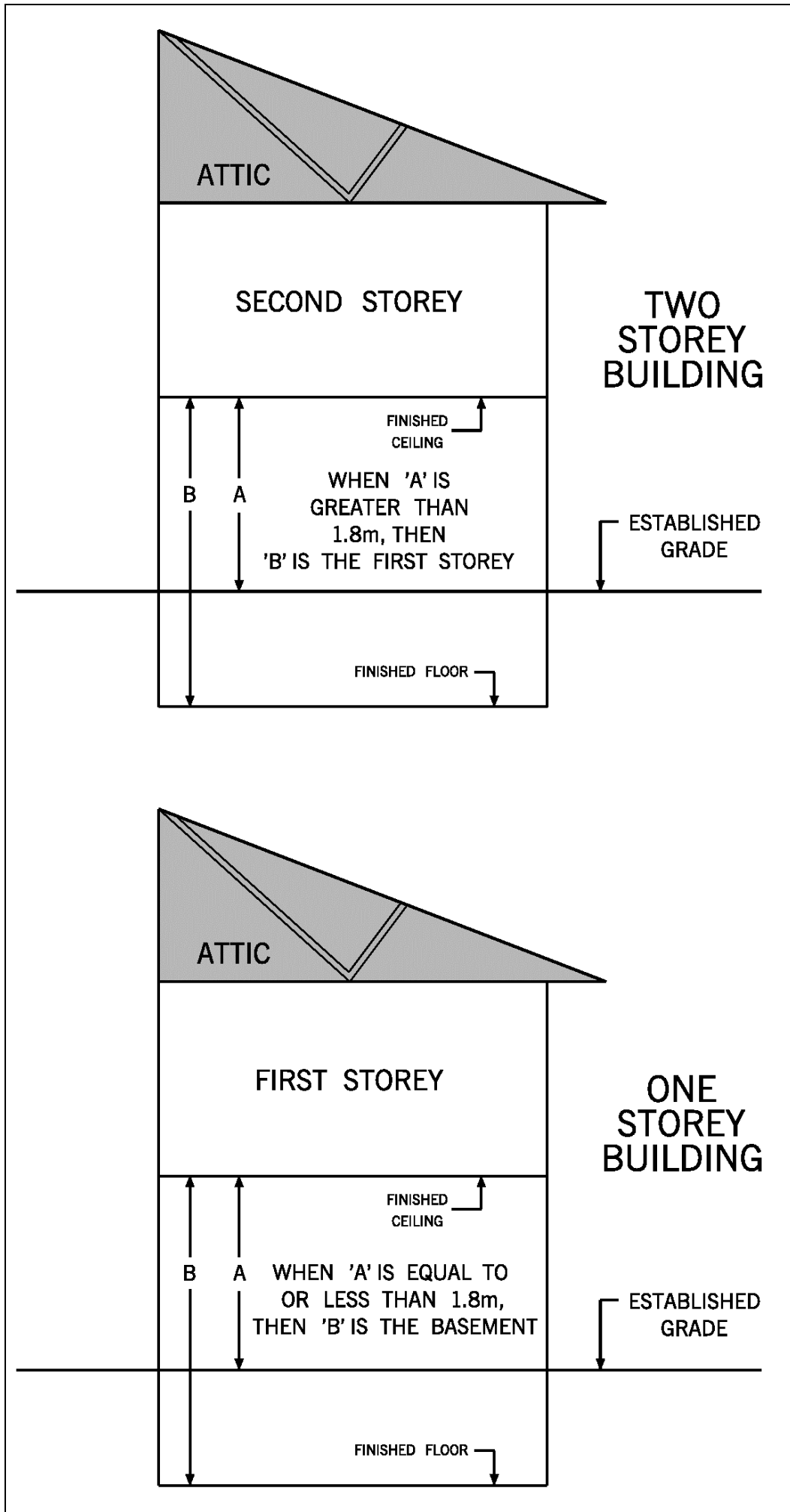


Illustration No. 9

STOREY

Note: The above illustrations are for clarification and convenience only and do not form part of this By-law. The Definitions and General Provisions parts of this By-law must be referenced.

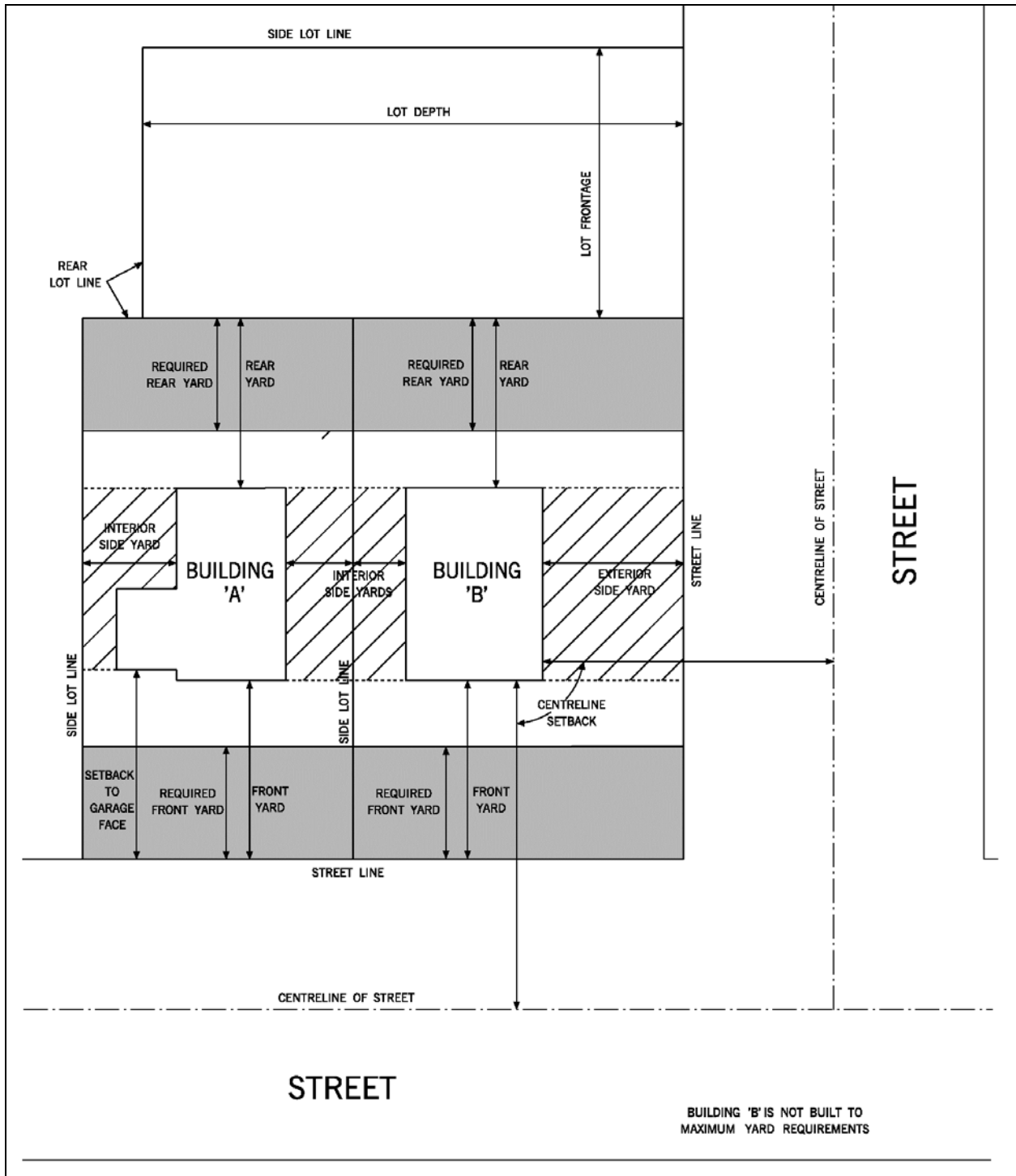


Illustration No. 10

YARD

Note: The above illustrations are for clarification and convenience only and do not form part of this By-law. The Definitions and General Provisions parts of this By-law must be referenced.

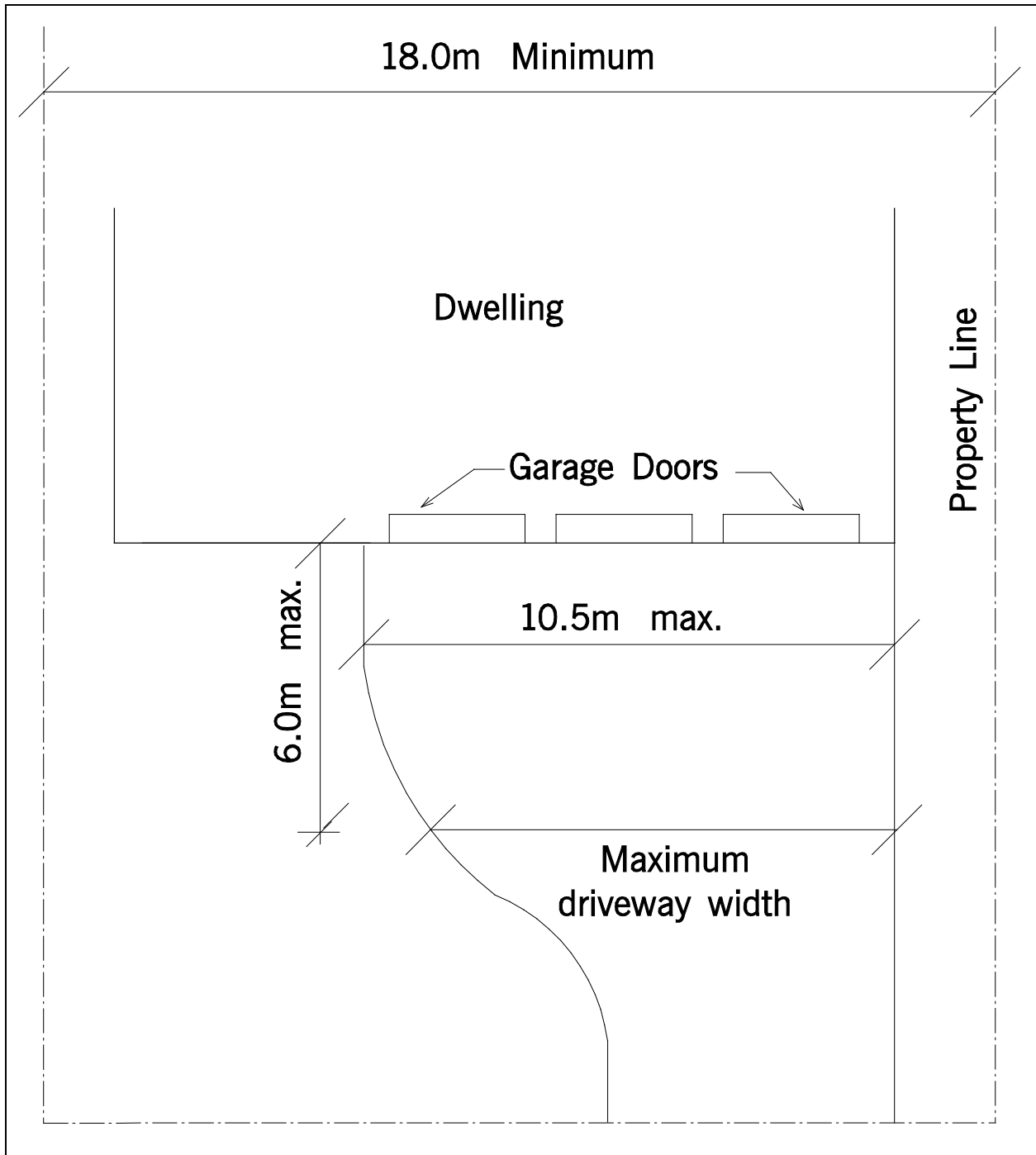


Illustration No. 11

**INCREASED DRIVEWAY WIDTH
FOR WIDE GARAGES**

Note: The above illustrations are for clarification and convenience only and do not form part of this By-law. The Definitions and General Provisions parts of this By-law must be referenced.

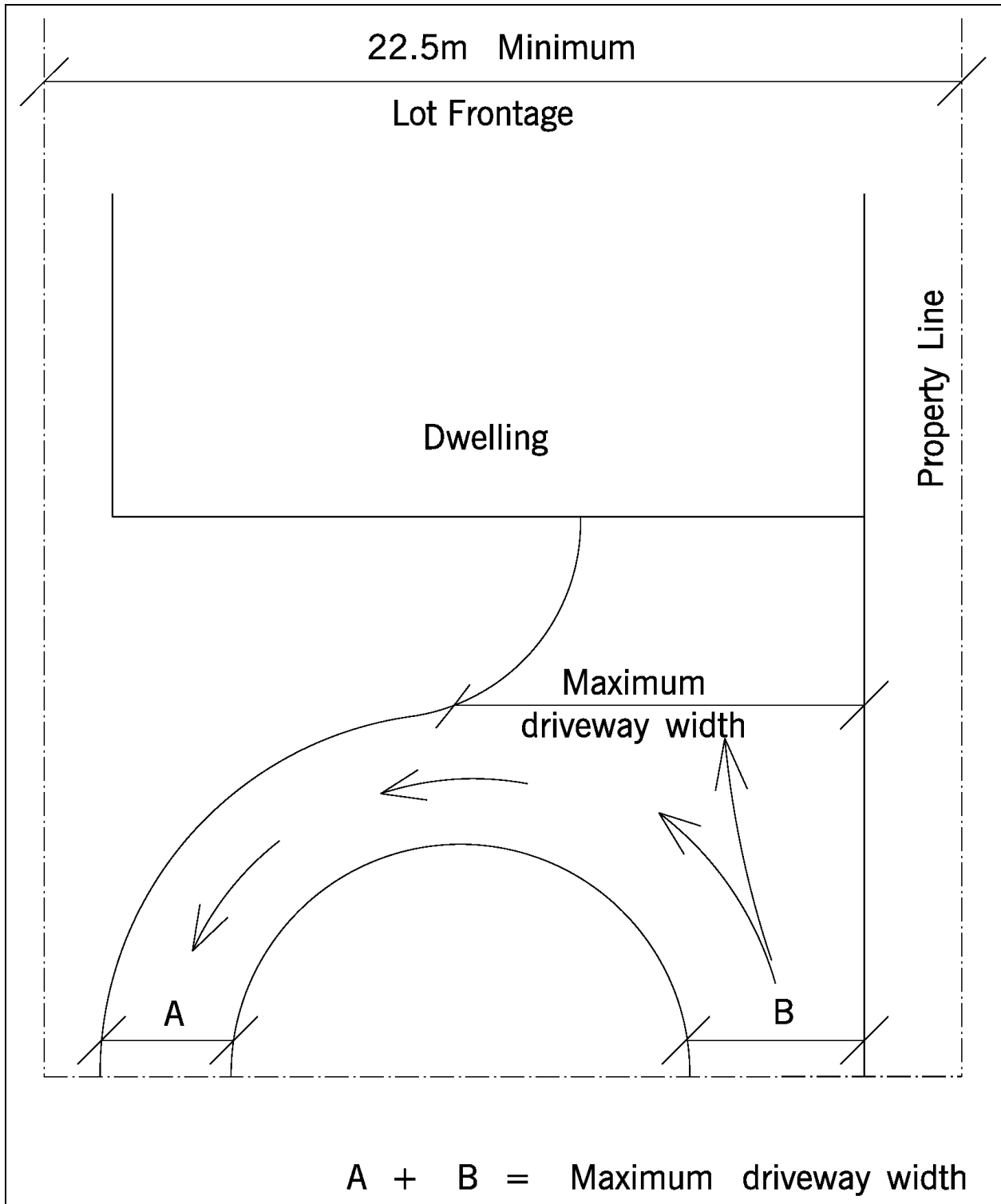


Illustration No. 12

CIRCULAR DRIVEWAYS

Note: The above illustrations are for clarification and convenience only and do not form part of this By-law. The Definitions and General Provisions parts of this By-law must be referenced.

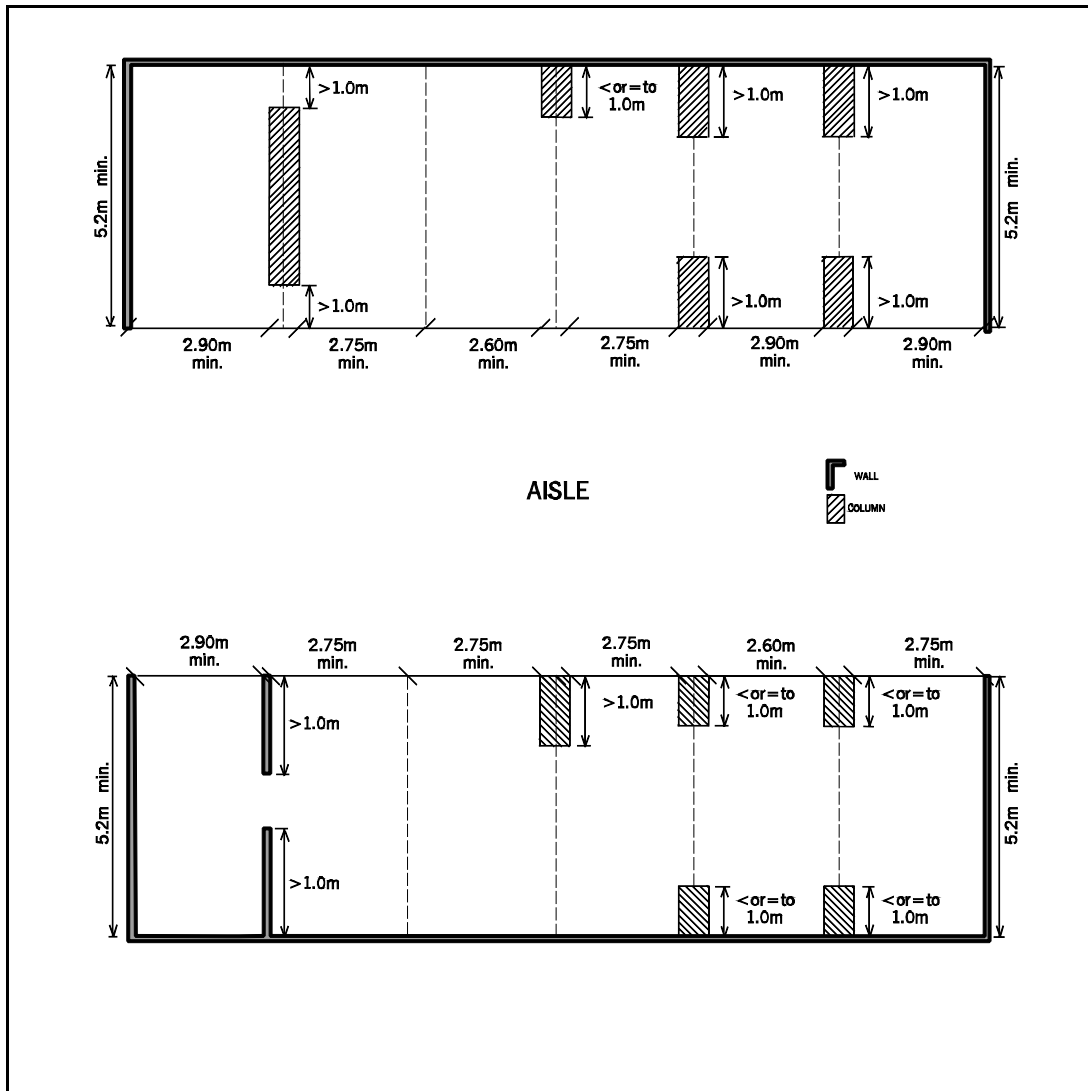


Illustration No. 13 INCREASED PARKING SPACE WIDTHS

Note: The above illustrations are for clarification and convenience only and do not form part of this By-law. The Definitions and General Provisions parts of this By-law must be referenced.

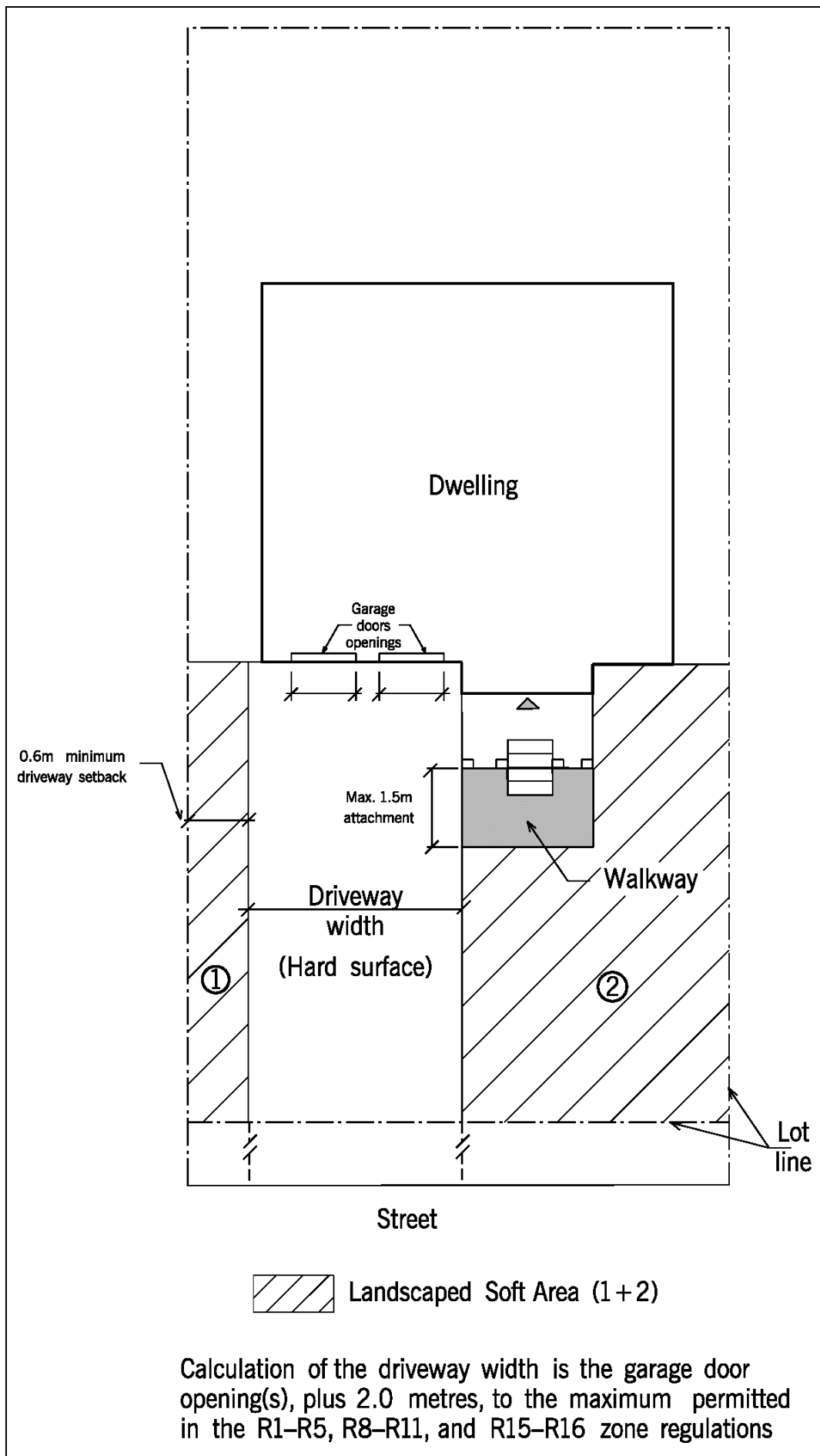


Illustration No. 14

DRIVEWAY WIDTH CALCULATION

Note: The above illustrations are for clarification and convenience only and do not form part of this By-law. The Definitions and General Provisions parts of this By-law must be referenced.

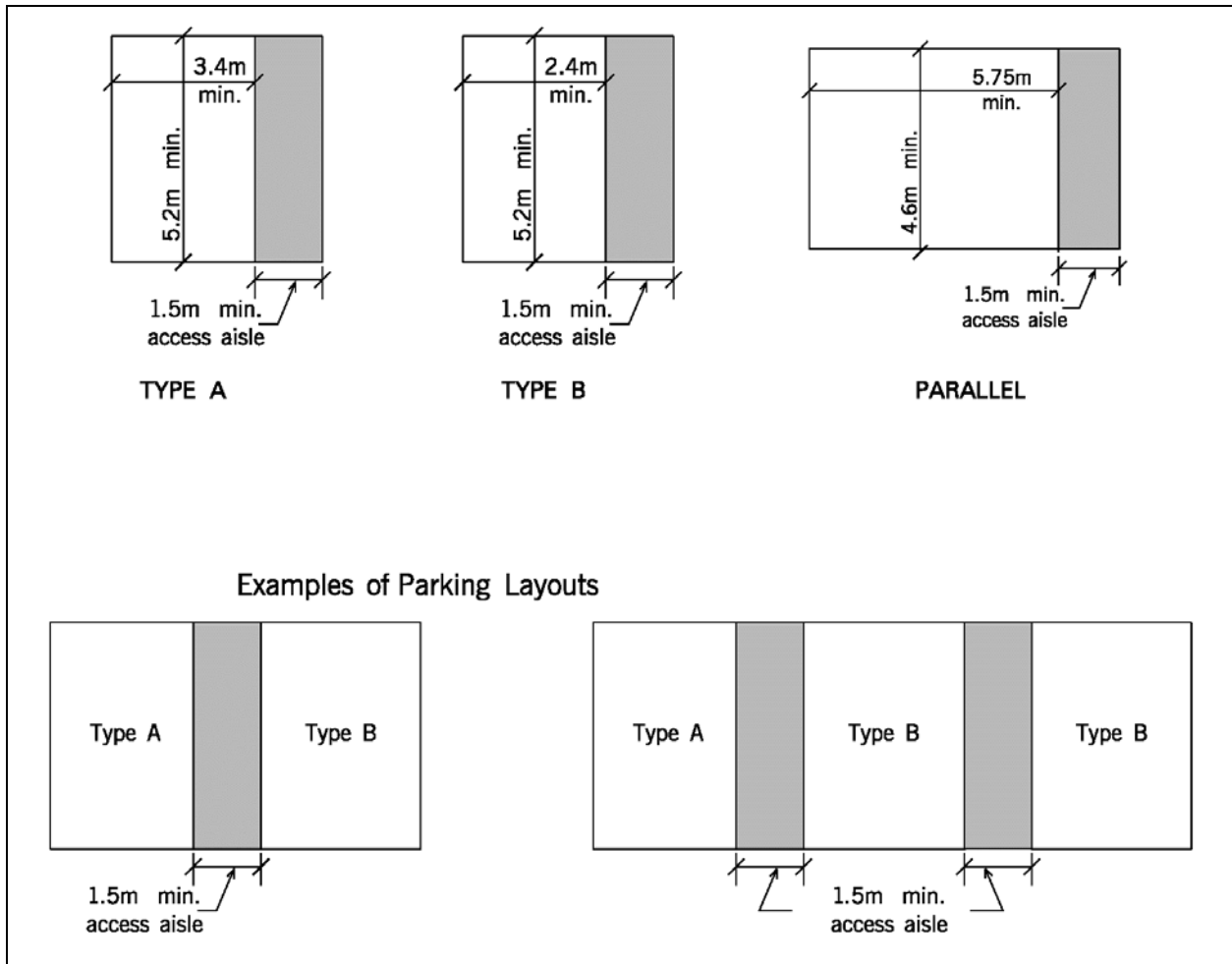


Illustration No. 15

ACCESSIBLE PARKING SPACE

Note: The above illustrations are for clarification and convenience only and do not form part of this By-law. The Definitions and General Provisions parts of this By-law must be referenced.

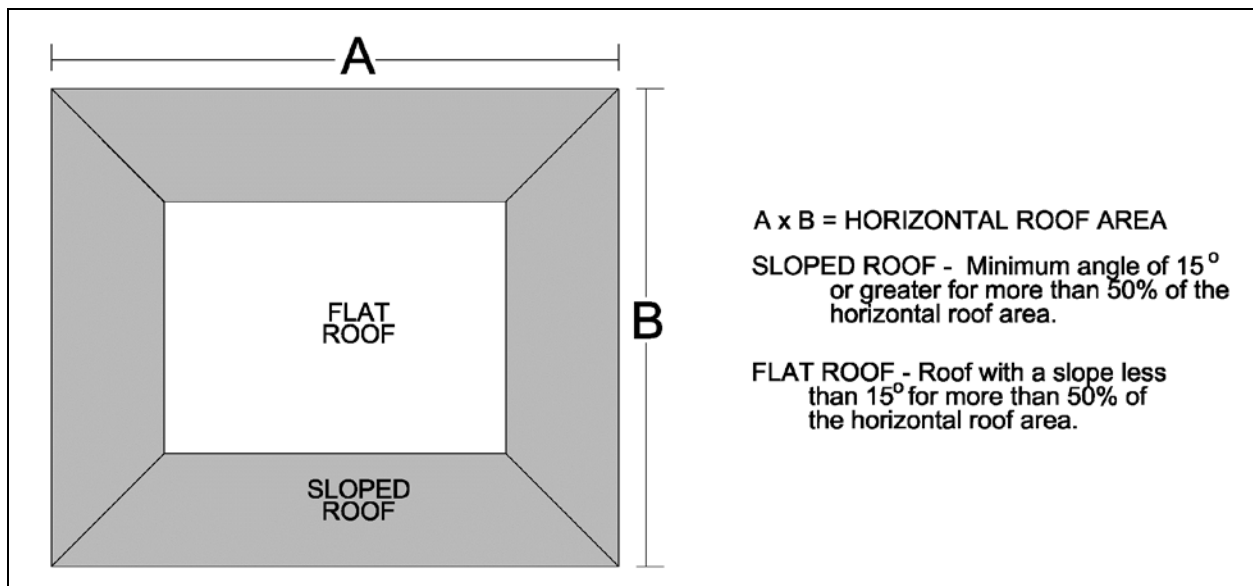


Illustration No. 16

FLAT/SLOPED ROOF AREA CALCULATIONS

Note: The above illustrations are for clarification and convenience only and do not form part of this By-law. The Definitions and General Provisions parts of this By-law must be referenced.

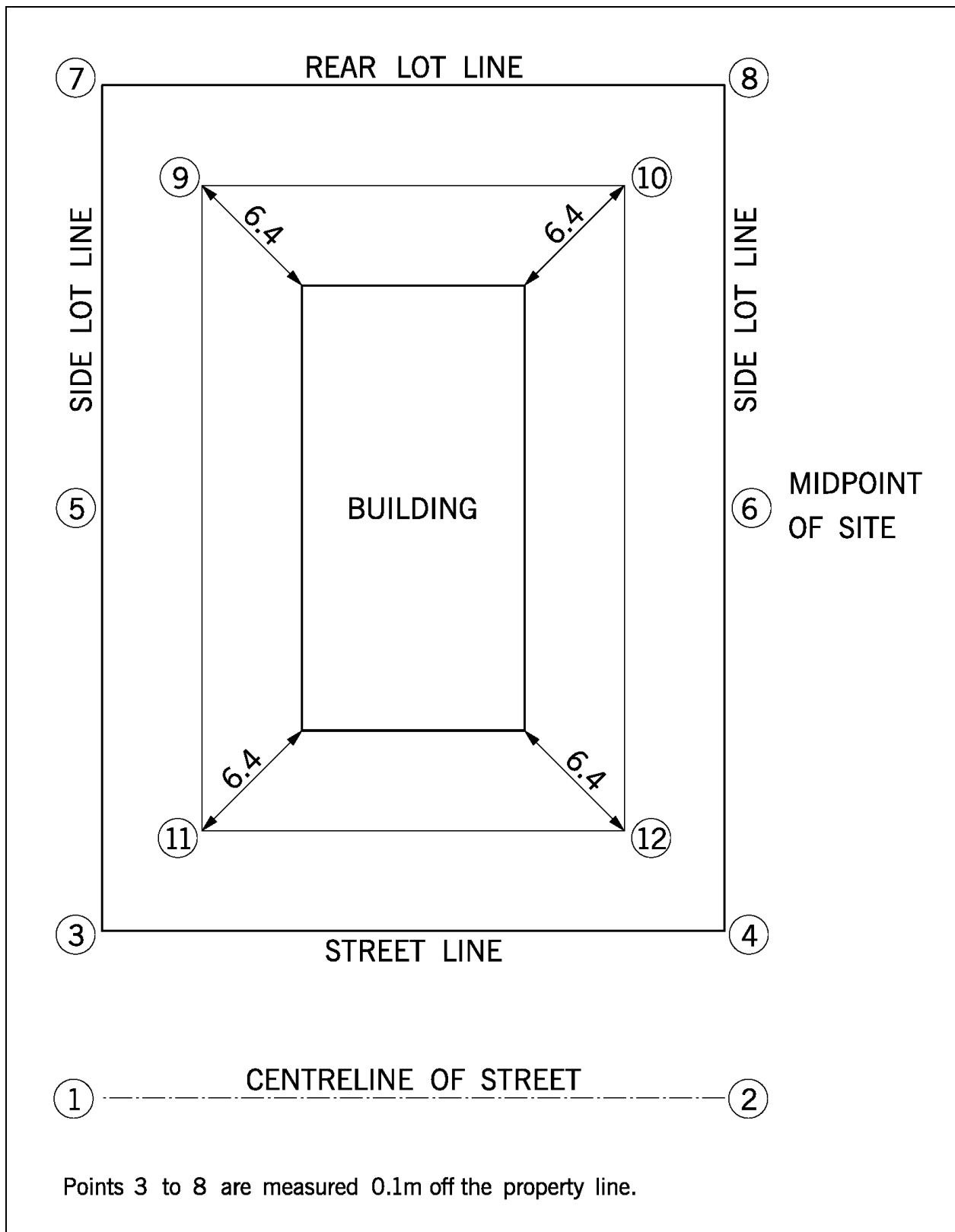


Illustration No. 17

CONTEXT GRADE

Note: The above illustrations are for clarification and convenience only and do not form part of this By-law. The Definitions and General Provisions parts of this By-law must be referenced.

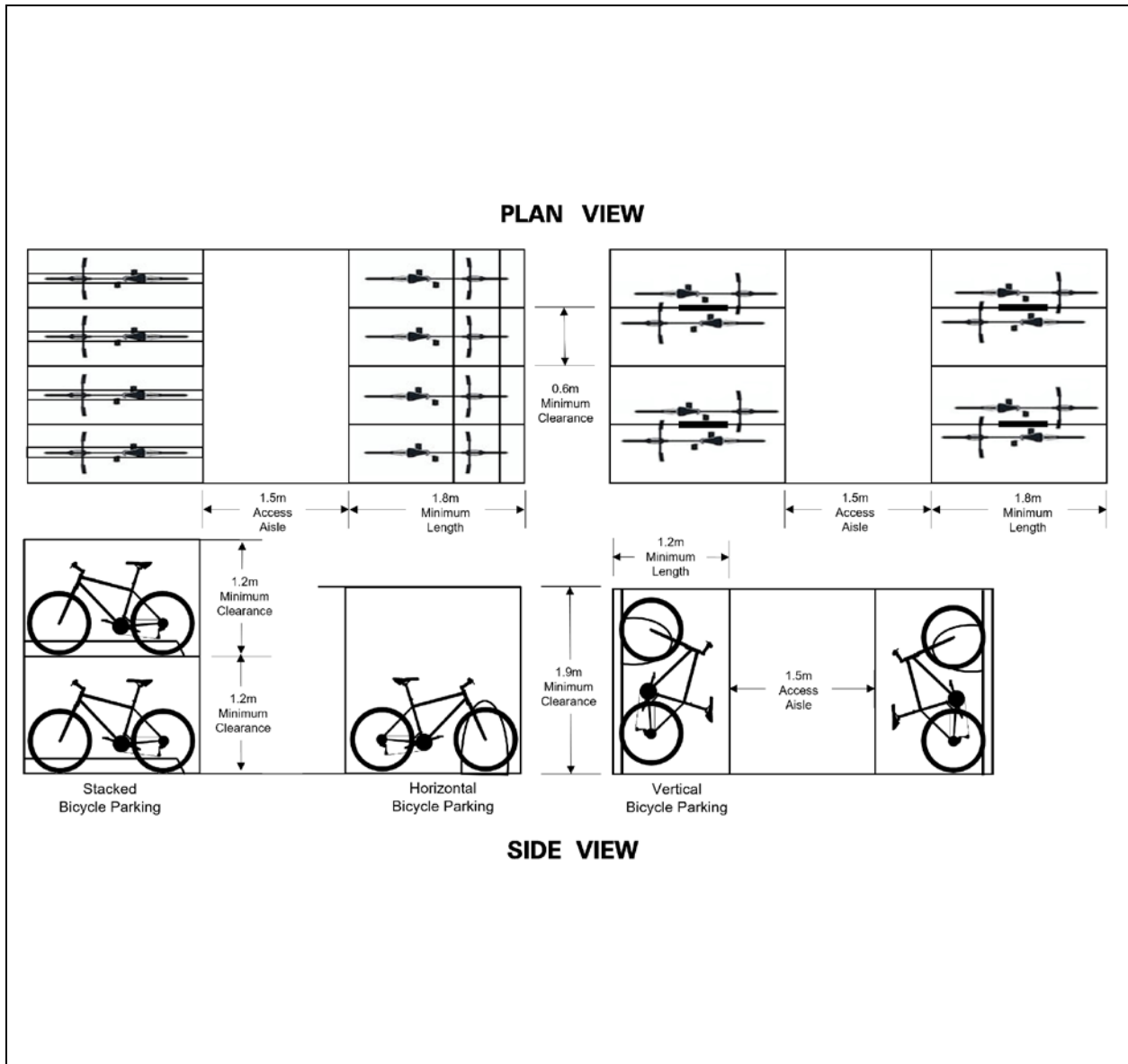


Illustration No. 18

BICYCLE PARKING

Note: The above illustrations are for clarification and convenience only and do not form part of this By-law. The Definitions and General Provisions parts of this By-law must be referenced.